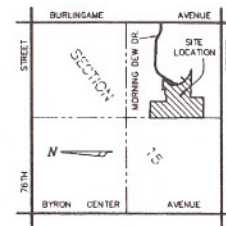


MISTY RIDGE ESTATES NO. 4
 Part of the S.E. 1/4, Section 15, T5N, R12W
 Byron Township, Kent County, Michigan
 Sheet 3 of 3

0' 15' 30' 60'
 SCALE: 1" = 60'

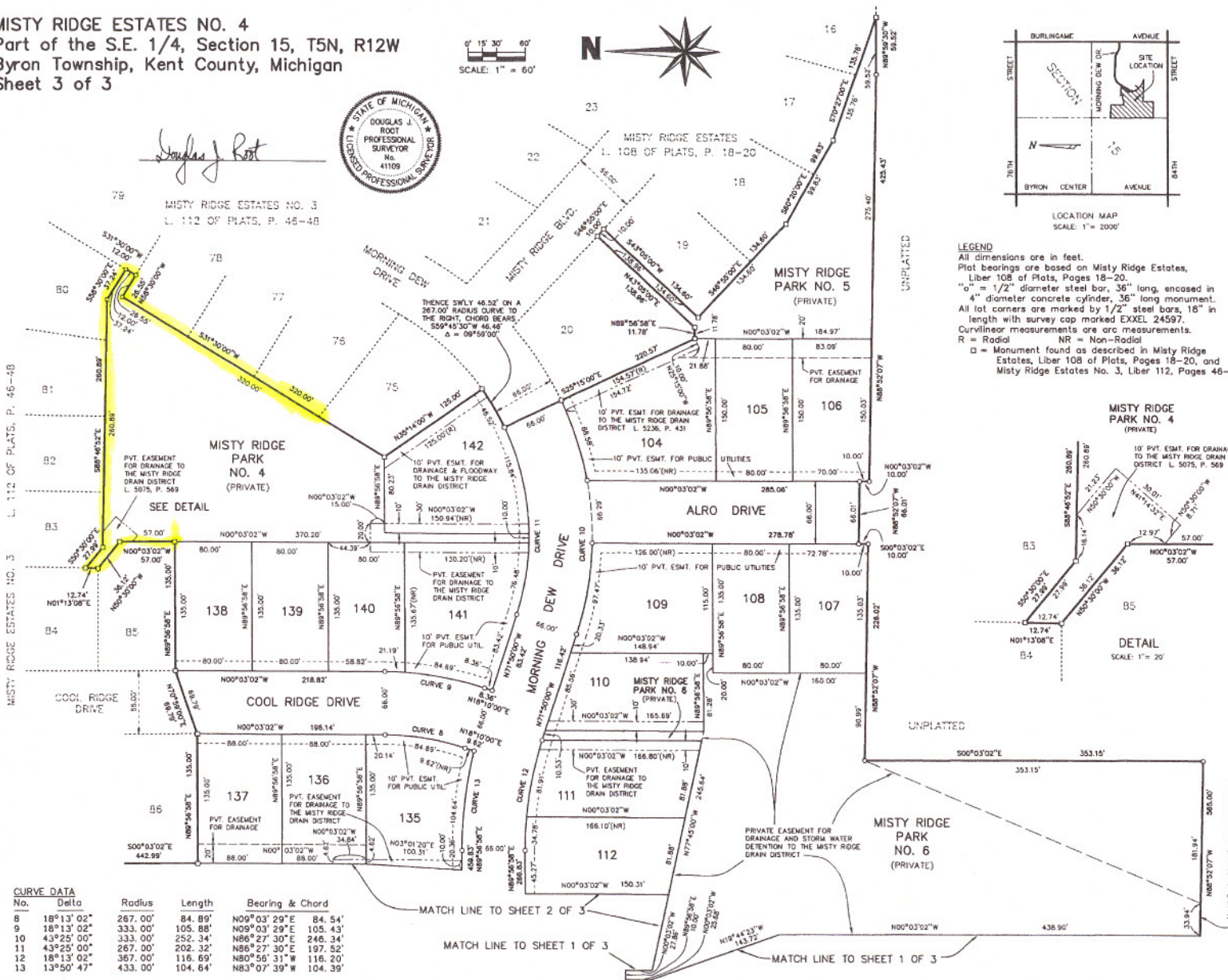


Douglas J. Root



LOCATION MAP
 SCALE: 1" = 2000'

LEGEND
 All dimensions are in feet.
 Plat bearings are based on Misty Ridge Estates,
 Liber 108 of Plats, Pages 18-20.
 "o" = 1/2" diameter steel bar, 36" long, enclosed in
 4" diameter concrete cylinder, 36" long monument.
 All lot corners are marked by 1/2" steel bars, 18" in
 length with survey cap marked EXXEL 24597.
 Curvilinear measurements are arc measurements.
 R = Radial NR = Non-Radial
 □ = Monument found as described in Misty Ridge
 Estates, Liber 108 of Plats, Pages 18-20, and
 Misty Ridge Estates No. 3, Liber 112, Pages 46-48.



CURVE DATA

No.	Delta	Radius	Length	Bearing & Chord
8	18°13'02"	267.00'	84.89'	N06°03'29"E 84.54'
9	18°13'02"	333.00'	105.88'	N06°03'29"E 105.43'
10	43°25'00"	333.00'	252.34'	N86°27'30"E 248.34'
11	43°25'00"	267.00'	202.32'	N86°27'30"E 197.52'
12	18°13'02"	367.00'	116.69'	N80°56'31"W 116.20'
13	13°50'47"	433.00'	104.64'	N83°07'39"W 104.39'



DETAIL
 SCALE: 1" = 20'

66321